



320-251-5090

800-728-5091

P.O. Box 547

32640 Co. Rd. 133

St. Joseph, MN 56374

[trautcompanies.com](http://trautcompanies.com)

 /trautcompanies

### **Safety always comes first at Traut Companies.**

We provide over 500 hours of training and certifications annually with our safety committee and leadership team.

We also have a full-time safety coordinator on staff. Brad Kirckof is a retired fire firefighter and safety trainer with extensive experience. He can be reached at 320-251-5090 or [bradk@trautcompanies.com](mailto:bradk@trautcompanies.com).

- » Tailgate meetings and JSA's
- » MSHA certification
- » OSHA 40-hour HAZWOPER certification
- » First Aid, CPR, and AED certification
- » Hazardous Materials and AWAIR certification

## **ABOUT US**



**Mark Traut**



**Dave Traut**

Cousins, Mark and Dave Traut grew up working for the family company known as Traut Wells, which was started in 1959. The company was dissolved for a time in 1982 but reopened later that year as Mark J. Traut Wells, Inc. (currently known as Traut Companies) by Mark and Dave. It was obvious from the start that Mark and Dave offered their customers not just top-of-the-line service but an integrity that customers recognized and appreciated.

Right away, they sought to diversify, offering new, better, and valuable services to their customers. They looked for and expanded into related markets. Today, they employ more than 65 full-time people, in eight different departmental areas, each area having its own experts. The companies' steady growth and expertise has brought them to the attention of customers nationwide, who rely on their services.

Traut has never stopped experimenting with new technology. It's what keeps them at the top of their industry. They're big supporters of their industry, and donate to technological research that is sure to lead to important and exciting advances.

# **WE KNOW WATER**



320-251-5090

800-728-5091

P.O. Box 547

32640 Co. Rd. 133

St. Joseph, MN 56374

trautcompanies.com



### Jake Tomsche

#### Residential & Rotary Drilling Manager

320-290-6907

jaket@trautcompanies.com

### Safety always comes first at Traut Companies.

We provide over 500 hours of training and certifications annually with our safety committee and leadership team.

We also have a full-time safety coordinator on staff. Brad Kirckof is a retired fire firefighter and safety trainer with extensive experience. He can be reached at 320-251-5090 or bradk@trautcompanies.com.

- » Tailgate meetings and JSA's
- » MSHA certification
- » OSHA 40-hour HAZWOPER certification
- » First Aid, CPR, and AED certification
- » Hazardous Materials and AWAIR certification

## DOMESTIC, IRRIGATION, AND SMALL MUNICIPALS DRILLING



### THREE RIG FLEET:

Two Versa-Drill NG 100 rotary rigs on 6x6 Peterbilts

One TH60 rotary rig on 2013 Peterbuilt

### CAPABILITIES:

- » Mud rotary, reverse circulation, and air hammer
- Air and mud rotary drilling with surface sampling up to 750 feet*
- 2-inch, 4-inch, and 6-inch wells up to 600 feet*
- 8-inch and 12-inch wells up to 350 feet*

# WE KNOW WATER





320-251-5090

800-728-5091

P.O. Box 547

32640 Co. Rd. 133

St. Joseph, MN 56374

trautcompanies.com



### **Brad Kirckof**

**Project Manager/  
Geoprobe Specialist**

320-335-1270

bradk@trautcompanies.com

**Traut Companies has  
experienced drill teams.  
We've been Geoprobe  
Drilling since 2012!**

### **Safety always comes first at Traut Companies.**

We provide over 500 hours of training and certifications annually with our safety committee and leadership team.

We also have a full-time safety coordinator on staff. Brad Kirckof is a retired fire firefighter and safety trainer with extensive experience. He can be reached at 320-251-5090 or [bradk@trautcompanies.com](mailto:bradk@trautcompanies.com).

- » Tailgate meetings and JSA's
- » MSHA certification
- » OSHA 40-hour HAZWOPER certification
- » First Aid, CPR, and AED certification
- » Hazardous Materials and AWAIR certification

## **GEOPROBE DRILLING**



### **TWO RIG FLEET:**

One Geoprobe 7800 with auger head on 4x4 Dodge

One Geoprobe 661ODT with auger on tracks

Air knife available

### **CAPABILITIES:**

- » Probe up to 100 feet
- » Auger up to 50 feet
- » Petro-fund registered contractor
- » Drill monitor, recovery, and residential wells
- » Sample soil, water, and soil vapor up to 100 feet
- » Continuous core samples of unconsolidated materials
- » Discrete interval sampling capabilities
- » Soil and sub-slab vapor implants
- » Vertical and horizontal well abandonments
- » Drill 4-inch and 6-inch wells up to 50 feet
- » Set 2-inch and 4-inch wells up to 50 feet
- » Track rig can fit into smaller, indoor locations
- » Air knife can be used with or without water for pothole and utility verification

# **WE KNOW WATER**





320-251-5090  
800-728-5091

P.O. Box 547  
32640 Co. Rd. 133  
St. Joseph, MN 56374

[trautcompanies.com](http://trautcompanies.com)

 /trautcompanies



### **Kyle Meyer**

**Residential Service and  
Lawn Irrigation Manager**

320-251-5090  
[kylem@trautcompanies.com](mailto:kylem@trautcompanies.com)



### **Wayne Bills**

**Lawn Irrigation Coordinator**

320-894-1195  
[wayneb@trautcompanies.com](mailto:wayneb@trautcompanies.com)

### **Safety always comes first at Traut Companies.**

We provide over 500 hours of training and certifications annually with our safety committee and leadership team.

We also have a full-time safety coordinator on staff. Brad Kirckof is a retired fire firefighter and safety trainer with extensive experience. He can be reached at 320-251-5090 or [bradk@trautcompanies.com](mailto:bradk@trautcompanies.com).

- » Tailgate meetings and JSA's
- » MSHA certification
- » OSHA 40-hour HAZWOPER certification
- » First Aid, CPR, and AED certification
- » Hazardous Materials and AWAIR certification

## **LAWN IRRIGATION**



### **EQUIPMENT:**

**Two installation trucks and trailers**  
**Three service trucks**  
**Two Case Maxi-Sneaker trenchers**

### **CAPABILITIES:**

- » Residential and commercial lawn irrigation system installations
- » Residential and commercial lawn irrigation system repairs
- » Seasonal start-up and winterization of lawn irrigation systems
- » Backflow Prevention (PVB) testing

# **WE KNOW WATER**





320-251-5090

800-728-5091

P.O. Box 547

32640 Co. Rd. 133

St. Joseph, MN 56374

trautcompanies.com

 /trautcompanies



### **Joe Traut**

**Municipal and  
Commercial Manager**

320-402-4577

joet@trautcompanies.com



### **Dave Traut**

**Vice President  
Master Well Contractor**

320-250-5127

davet@trautcompanies.com

### **Safety always comes first at Traut Companies.**

We provide over 500 hours of training and certifications annually with our safety committee and leadership team.

We also have a full-time safety coordinator on staff. Brad Kirckof is a retired fire firefighter and safety trainer with extensive experience. He can be reached at 320-251-5090 or bradk@trautcompanies.com.

- » Tailgate meetings and JSA's
- » MSHA certification
- » OSHA 40-hour HAZWOPER certification
- » First Aid, CPR, and AED certification
- » Hazardous Materials and AWAIR certification

## **MUNICIPAL WELLS, PUMPS, AND BRIDGE PILINGS**



### **THREE RIG FLEET:**

Three Foremost DR24 dual rotary rigs

### **CAPABILITIES:**

- » Reverse circulation and air hammer
- » Dual rotary and air mud rotary drilling
- » Surface sampling up to 1500 feet
- » Cased flooded reverse and direct circulation drilling
- » Cased air reverse and direct circulation drilling
- » Angled drilling up to 24-inch diameter wells
- » Multi-cased wells up to 30-inch diameter wells
- » Gamma formation logging
- » Video borehole inspection

# **WE KNOW WATER**



320-251-5090  
800-728-5091

P.O. Box 547  
32640 Co. Rd. 133  
St. Joseph, MN 56374

trautcompanies.com

 /trautcompanies



**Kyle Meyer**

**Residential Service and  
Lawn Irrigation Manager**

320-251-5090  
kylem@trautcompanies.com

### **Safety always comes first at Traut Companies.**

We provide over 500 hours of training and certifications annually with our safety committee and leadership team.

We also have a full-time safety coordinator on staff. Brad Kirckof is a retired fire firefighter and safety trainer with extensive experience. He can be reached at 320-251-5090 or bradk@trautcompanies.com.

- » Tailgate meetings and JSA's
- » MSHA certification
- » OSHA 40-hour HAZWOPER certification
- » First Aid, CPR, and AED certification
- » Hazardous Materials and AWAIR certification

## **RESIDENTIAL, FARM, AND SMALL MUNICIPAL WELL SERVICE**



### **FIVE RIG FLEET:**

Five, 2 to 6-ton, Smeal pump trucks on Freightliners

### **CAPABILITIES:**

- » Pulling and repair of smaller pumps
- Set new and repair submersible pumps*
- Set new and rehab for remediation wells*
- Repair all types of water pumps*

# **WE KNOW WATER**





320-251-5090

800-728-5091

P.O. Box 547

32640 Co. Rd. 133

St. Joseph, MN 56374

trautcompanies.com

 /trautcompanies



**Daryl Karasch**

**Sonic Drill Manager**

320-249-6317

darylk@trautcompanies.com

**Traut Companies has  
experienced drill teams.**

**We've been Sonic  
Drilling since 1998!**

### **Safety always comes first at Traut Companies.**

We provide over 500 hours of training and certifications annually with our safety committee and leadership team.

We also have a full-time safety coordinator on staff. Brad Kirckof is a retired fire firefighter and safety trainer with extensive experience. He can be reached at 320-251-5090 or bradk@trautcompanies.com.

- » Tailgate meetings and JSA's
- » MSHA certification
- » OSHA 40-hour HAZWOPER certification
- » First Aid, CPR, and AED certification
- » Hazardous Materials and AWAIR certification

## **ROTOSONIC DRILLING**



### **FOUR RIG FLEET:**

Three Versa-Sonic rigs with 50K heads on Kenworth trucks

One Layne track-mounted mid-size Sonic rigs with 50K heads

Skid loaders are provided on job sites

Air knife available

### **CAPABILITIES:**

- » Core samples can be taken up to 600 feet deep
  - 4-inch and 6-inch diameter continuous cores in unconsolidated and solid formations*
  - 6-inch, 8-inch and 10-inch diameter temporary casing liner*
- » 4 inch x 5 feet Sonic Lexon liner cores
- » Install monitoring or temporary wells up to 6-inch diameter
- » Ability to do water profiling and vapor sampling
- » Well abandonment and overshoot capabilities
- » Test borings for municipal and high production wells
- » Temporary wells for capacity test
- » Support truck and rig can be separated to reconfigure for small locations
- » Drill all over the contiguous United States
- » Experience in drilling through water on a barge/mudbuggy
- » Artesian well control
- » Video camera, gamma logs, heat-pulse flow meter, and acoustic televiewer can be used on Sonic boreholes

# **WE KNOW WATER**



320-251-5090

800-728-5091

P.O. Box 547

32640 Co. Rd. 133

St. Joseph, MN 56374

trautcompanies.com



### Daryl Karasch

#### Sonic Drill Manager

320-249-6317

daryl@trautcompanies.com

**Traut Companies has  
experienced drill teams.  
We've been sonic  
drilling since 1998!**

### Safety always comes first at Traut Companies.

We provide over 500 hours of training and certifications annually with our safety committee and leadership team.

We also have a full-time safety coordinator on staff. Brad Kirckof is a retired fire firefighter and safety trainer with extensive experience. He can be reached at 320-251-5090 or [bradk@trautcompanies.com](mailto:bradk@trautcompanies.com).

- » Tailgate meetings and JSA's
- » MSHA certification
- » OSHA 40-hour HAZWOPER certification
- » First Aid, CPR, and AED certification
- » Hazardous Materials and AWAIR certification

## TRACK SONIC DRILLING



### TWO RIG FLEET:

Two Layne track-mounted rigs with 50K Sonic drill heads

Track-mounted skid loader is provided on job sites

### RIG SPECIFICATIONS:

- » Length: 21 feet
- » Width: 8.6 feet
- » Set Up Height: 24 feet
- » Travel Height: 10 feet 9 inches
- » Weight: 35,000 pounds
- » Track Ground Pressure: 7.14 P.S.I.
- » 4 inch x 5 feet Sonic Lexon liner cores

### CAPABILITIES:

- » Ability to drill through unconsolidated formations  
*Collect 4-inch and 6-inch unconsolidated samples*
- » Ability to drill through bedrock  
*Collect 3.5-inch bedrock samples*
- » Set 6-inch, 8-inch, and 10-inch liners up to 150 feet
- » Angle drilling to various degrees
- » Grout depths to 500 feet
- » Well abandonment and overshoot

# WE KNOW WATER





320-251-5090

800-728-5091

P.O. Box 547

32640 Co. Rd. 133

St. Joseph, MN 56374

trautcompanies.com



### Joe Traut

**Municipal and  
Commercial Manager**

320-402-4577

joet@trautcompanies.com



### Dave Traut

**Vice President  
Master Well Contractor**

320-250-5127

davet@trautcompanies.com

### Safety always comes first at Traut Companies.

We provide over 500 hours of training and certifications annually with our safety committee and leadership team.

We also have a full-time safety coordinator on staff. Brad Kirckof is a retired fire firefighter and safety trainer with extensive experience. He can be reached at 320-251-5090 or bradk@trautcompanies.com.

- » Tailgate meetings and JSA's
- » MSHA certification
- » OSHA 40-hour HAZWOPER certification
- » First Aid, CPR, and AED certification
- » Hazardous Materials and AWAIR certification

## TURBINE AND LARGE WELL SERVICES



### FOUR RIG FLEET:

Two 18-ton pump hoists

One 25-ton crane to 92 feet lift

One 6-ton Smeal hoist truck

### CAPABILITIES:

- » Pull up to 25-ton pumps
  - Set new or rebuild pumps*
  - Submersible pumps*
  - Line shaft turbine pumps*
- » Short set turbine pumps
- » Optional well rehab equipment:
  - Well tower for well rehab down to 1000 feet*
  - Airshock Impulse Generator (AIG)*
  - Acid treating*
  - Sand removal*
  - Jetting—both air and water*

# WE KNOW WATER





320-251-5090  
800-728-5091

P.O. Box 547  
32640 Co. Rd. 133  
St. Joseph, MN 56374

trautcompanies.com

/trautcompanies



### Travis Traut

**Field Support Engineer**

320-249-6496  
travist@trautcompanies.com



### Dave Traut

**Vice President  
Master Well Contractor**

320-250-5127  
davet@trautcompanies.com

## WELL AND BOREHOLE VIDEO INSPECTION

Gamma, Spontaneous Potential (SP), and Single Point Resistance (SPR) Logging



### EQUIPMENT:

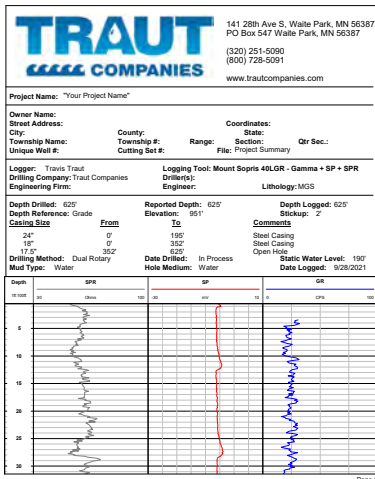
Aries BT9600 Dual Viewing Color Camera

Mount Sopris 40LGR—Gamma + SP + SPR with Matrix Logger

### CAPABILITIES:

- » Front viewing and 360° sideview
- » Full color picture
- » Record to mp4 file or burn to dvd
- » 1000' camera winch cable
- » 4" minimum casing or borehole
- » Gamma logging
- » Spontaneous potential (SP) logging
- » Single point resistance (SPR) logging
- » 1640' logging winch cable
- » Wellcad software summary
- » Water or mud borehole fluid

### WellCAD Summary Example



# WE KNOW WATER





320-251-5090  
800-728-5091

P.O. Box 547  
32640 Co. Rd. 133  
St. Joseph, MN 56374

trautcompanies.com

 /trautcompanies



**Kayla Herdering**  
**Technical Director**

320-293-7947  
kaylah@trautcompanies.com

**Collecting Your  
Sample is Easy:**

We will provide sterile  
bottles or bags.

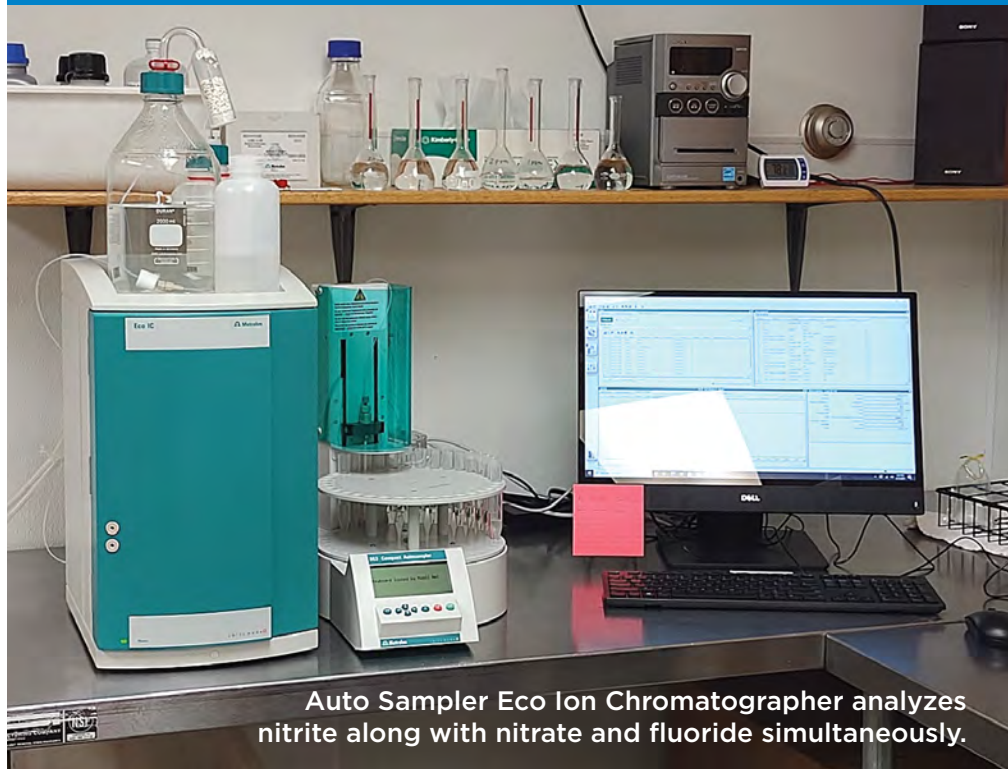
Specific instructions for  
how to collect a sample are  
available from our lab.

Please deliver samples  
directly to our lab.

*We accept samples  
Monday through Thursday  
from 7:30am-4:30pm.*

*Samples are not accepted  
Fridays or any day that  
precedes a holiday.*

## WATER ANALYSIS LAB



Auto Sampler Eco Ion Chromatographer analyzes  
nitrite along with nitrate and fluoride simultaneously.

### STATE CERTIFIED LABORATORY

As a state certified lab, we are required to follow specific standards of operation and participate in performance studies where the state knows results for the study and the laboratory does not.

### WE STAY UP TO DATE ON THE LATEST TECHNOLOGY:

We acquire new equipment and certifications which account for better accuracy and help to streamline our services for even faster turnaround times.

### WATER TESTING IS OFTEN NECESSARY FOR:

- » Construction Contractors
- » Private Well Owners
- » Daycare Providers
- » Real Estate Transactions
- » Foster Care Providers

Testing results are usually back within a week.

### TESTS MOST OFTEN INCLUDE, BUT ARE NOT LIMITED TO:

- » Arsenic
- » Lead
- » Bacteria (Coliform, E. coli)
- » Manganese
- » Fluoride
- » Nitrate
- » Hardness/Iron

If additional testing is required just ask, we are happy to accommodate.

# WE KNOW WATER



320-251-5090  
800-728-5091

P.O. Box 547  
32640 Co. Rd. 133  
St. Joseph, MN 56374

[trautcompanies.com](http://trautcompanies.com)

 /trautcompanies



**Jim Gruenke**

**Water Treatment Manager**

320-333-6293

[jimg@trautcompanies.com](mailto:jimg@trautcompanies.com)

## Is your water the best it can be?

At Traut Companies, we understand your need for quality water. That's why we carry a complete line of equipment—including custom made systems—to solve even the toughest water quality problems effectively and efficiently. We have been doing business in central Minnesota for over 60 years, so we know water from the bottom to the tap!

Our staff is professionally trained and dedicated to meeting all of your water quality needs. In fact, we won't be satisfied until you are...and we've made your water the best it can be.

# WATER TREATMENT



## DRINKING WATER SYSTEMS:

Be sure the water you drink not only tastes good but is healthful, too. Through a wide range of proven drinking water systems, Traut Companies can remove almost all contaminants, including:

- |            |              |                                |
|------------|--------------|--------------------------------|
| » Arsenic  | » Herbicides | » Sulfates                     |
| » Chlorine | » Lead       | » Total Dissolved Solids (TDS) |
| » Coliform | » Pesticides | » Trihalomethanes (THMs)       |
| » Copper   | » Nitrates   | » Unpleasant tastes and odors  |
| » Cysts    | » Nitrites   |                                |
| » Fluoride | » Sodium     |                                |

## WATER CONDITIONING:

From water softening to filtration, Traut Companies features the latest technology in a full range of sizes and configurations. They eliminate problems such as:

- |                    |                        |            |
|--------------------|------------------------|------------|
| » Chlorine         | » Iron/Sulfur Bacteria | » Sediment |
| » Hardness         | » Manganese            | » Tannins  |
| » Hydrogen Sulfide | » Odors                |            |
| » Iron/Rust        | » pH                   |            |

# WE KNOW WATER